

Belt conveyor model



SPŠ el.it, Dobruška - kroužek robotiky

[VIEW IN BROWSER](#)

updated 30. 4. 2022 | published 30. 4. 2022

Summary

Model dopravníku pro výukové účely.

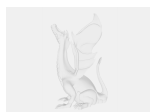
[Hobby & Makers](#) > [Electronics](#)

Tags: [automation](#) [robotic](#) [vzdelavani](#) [robotika](#) [automatizace](#)

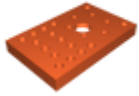
Použité komponenty:

- Motor GM37 (po úpravě destičky lze použít i jiné motory)
- Hliníkové profily 30 x 30 mm, délka podle délky pásu
- Pás (od firmy REKO s.r.o.)
- Ozubená kola, otvor vrtaný na průměr hřídele motoru, a řemen (dostupné v SEGMENT Industries s.r.o.)
- Šroubky a maticky

Model files



[dopravnik.dwg](#)



drzakdcmotoru_1x.stl



napinani_2x.stl



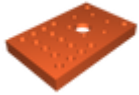
drzsenszm3_2x.stl



spojka_2x.stl



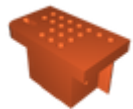
drzsenszm12_2x.stl



drzakdcmotoru_1x.stl



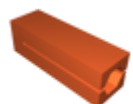
drzsenszm20_2x.stl



osazeni1b_1x.stl



osazeni2b_1x.stl



trn_4x.stl



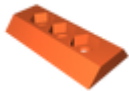
osazeni2a_1x.stl



valec2_1x.stl



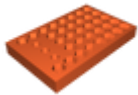
osazeni1a_1x.stl



vlozka_6x.stl



valec1_1x.stl



stojna_3x.stl

License ©

This work is licensed under a
[Creative Commons \(4.0 International License\)](https://creativecommons.org/licenses/by-sa/4.0/)



Attribution-ShareAlike

- ✘ | Sharing without ATTRIBUTION
- ✓ | Remix Culture allowed
- ✓ | Commercial Use
- ✓ | Free Cultural Works
- ✓ | Meets Open Definition

